

Be Confident with Sustained Accuracy Over Time

Neptune® MACH 10® Ultrasonic Meter



The MACH 10® ultrasonic water meter features solid state metrology with no degradation of accuracy over time. Combined with a corrosion-resistant, lead free, high-copper alloy maincase, the MACH 10 is built to withstand demanding service conditions and deliver sustained accuracy over the life of the meter.

- Sizes 1½" and 2"
- Extended low-flow range for superior leak detection
- Accuracy sustained over meter life
- Can be installed in both horizontal and vertical applications
- Advanced ultrasonic technology
- Lead free, high-copper alloy maincase
- Certified to UL 327B (1½", 2") for residential fire service applications
- No maintenance

Accu-Flo
1-800-921-2228
www.accuflo.com


NEPTUNE
TECHNOLOGY GROUP
#winyourday

Specifications

AWWA C715 Compliant

NSF/ANSI 61 Certified

UL 327B Certified

(Optional for 1½", 2")

Application

- Cold water measurement of flow in potable, combination potable and fire service, and reclaim/secondary water applications.

Maximum Operating Water Pressure

- 175 psi

Operating Water Temperature Range

- +33°F to +122°F (+0.5°C to +50°C)

Environmental Conditions

- Operating temperature:
+14°F to +149°F (-10°C to +65°C)
- Storage temperature:
-40°F to +158°F (-40°C to +70°C)

Options

Sizes

- 1½"
- 2"

Meter Options

- Potable water
- Reclaim water
- Residential fire service (combo or standalone meter service lines)

Warranty

- Neptune provides a limited warranty for performance, materials, and workmanship. See warranty statement for details.

System Compatibility

- Compatible with all Neptune endpoints. Also available as MACH 10®)R900i™ for an integrated radio solution and MACH 10®)TC for Sensus Touch Coupler compatibility.

Operating Characteristics

Meter Size	Normal Operating Range @ 100% Accuracy (+/- 1.5%)	AWWA C715 Standard Type 1	Extended Low Flow @ 100% Accuracy (+/- 3.0%)
1½"	0.80 to 125 U.S. gpm	2.0 to 100 U.S. gpm	0.30 U.S. gpm
2"	1.50 to 160 U.S. gpm	2.5 to 160 U.S. gpm	0.50 U.S. gpm

Dimensions

Meter Size	Length	Height	Flanges
1½"	10"	6¼"	Oval
	13"	6¼"	Oval
	12⅝"	6¼"	Internal Thread
	12⅞"	6¼"	External Thread
2"	10"	6½"	Oval
	15¼"	6½"	Oval
	17"	6½"	Oval
	15¼"	6½"	Internal Thread
	15¼"	6½"	External Thread

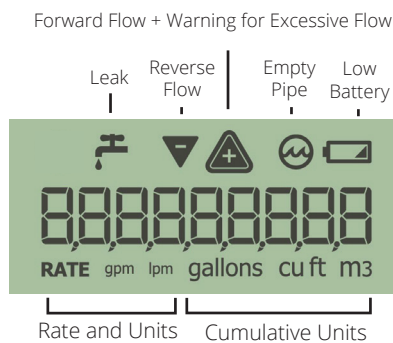
Available Units of Measure

Consumption	Rate
Gallons	GPM
Cubic Feet	GPM
Cubic Metres	LPM
Cubic Meters (International)	LPM
Imperial Gallons	GPM
Acre-Feet*	GPM
Litres*	LPM
Kilolitres*	LPM

*Unit cannot be displayed on LCD

LCD Display

9-digit display for extra resolution on manual reads.

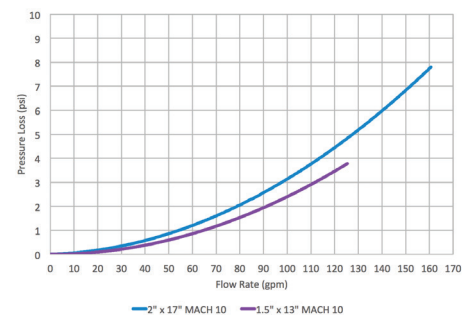


Registration

High Resolution (8-digit reading)		1½"	2"
1	U.S. Gallons	√	√
1	Imperial Gallons	√	√
0.1	Cubic Feet	√	√
0.01	Cubic Metres	√	√

Pressure Loss

Typical meter performance. Individual results may vary.



Accu-Flo
1-800-921-2228
www.accuflo.com



neptunetg.com

Neptune Technology Group
1600 Alabama Highway 229
Talladega, AL 36078
800-633-8754 f 334-283-7293