

# Be Confident with Sustained Accuracy Over Time

Neptune® MACH 10® Ultrasonic Meter



The MACH 10® ultrasonic water meter features solid state metrology with no degradation of accuracy over time. Combined with a corrosion-resistant, lead free, high-copper alloy maincase, the MACH 10 is built to withstand demanding service conditions and deliver sustained accuracy over the life of the meter.

- Sizes 5/8", 3/4", and 1"
- Extended low-flow range for superior leak detection
- Accuracy sustained over meter life
- Can be installed in both horizontal and vertical applications
- Advanced ultrasonic technology
- Lead free, high-copper alloy maincase
- Certified to UL 327B (3/4", 1") for residential fire service applications
- No maintenance

**Accu-Flo**  
1-800-921-2228  
[www.accuflo.com](http://www.accuflo.com)

  
**NEPTUNE**  
TECHNOLOGY GROUP  
#winyourday

## Specifications

AWWA C715 Compliant

NSF/ANSI 61 Certified

UL327B Certified

(Optional on ¾", 1")

### Application

- Cold water measurement of flow in residential potable, combination potable and fire service, and reclaim/secondary water applications.

### Maximum Operating Water Pressure

- 175 psi

### Operating Water Temperature Range

- +33°F to +122°F (+0.5°C to +50°C)

### Environmental Conditions

- Operating temperature: +14°F to +149°F (-10°C to +65°C)
- Storage temperature: -40°F to +158°F (-40°C to +70°C)

## Options

### Sizes

- 5/8", 5/8" x 3/4"
- 3/4", 3/4" x 1"
- 1", 1" x 1 1/4"

### Meter Options

- Potable water
- Reclaim water
- Residential fire service (combo or standalone meter service lines)

## Warranty

- Neptune provides a limited warranty for performance, materials, and workmanship. See warranty statement for details.

## System Compatibility

- Compatible with Neptune R900® and CMIU. Also available as MACH 10®)R900i™ for an integrated radio solution and MACH 10®)TC for Sensus Touch Coupler compatibility.

## Operating Characteristics

| Meter Size | Normal Operating Range @ 100% Accuracy (+/- 1.5%) | AWWA C715 Standard Type 1                 | Extended Low Flow @ 100% Accuracy (+/- 3%) |
|------------|---|---|--|
| 5/8"       | 0.10 to 25 U.S. gpm<br>0.02 to 5.68 m³/h          | 0.2 to 20 U.S. gpm<br>0.05 to 4.54 m³/h   | 0.05 U.S. gpm<br>0.01 m³/h                 |
| 3/4"       | 0.10 to 35 U.S. gpm<br>0.02 to 7.95 m³/h          | 0.5 to 30 U.S. gpm<br>0.11 to 6.81 m³/h   | 0.05 U.S. gpm<br>0.01 m³/h                 |
| 1"         | 0.40 to 55 U.S. gpm<br>0.09 to 12.49 m³/h         | 0.75 to 50 U.S. gpm<br>0.17 to 11.35 m³/h | 0.25 U.S. gpm<br>0.06 m³/h                 |

## Available Units of Measure

| Consumption                  | Rate |
|------------------------------|------|
| Gallons                      | GPM  |
| Cubic Feet                   | GPM  |
| Cubic Metres                 | LPM  |
| Cubic Meters (International) | LPM  |
| Imperial Gallons             | GPM  |
| Acre-Feet*                   | GPM  |
| Litres*                      | LPM  |
| Kilolitres*                  | LPM  |

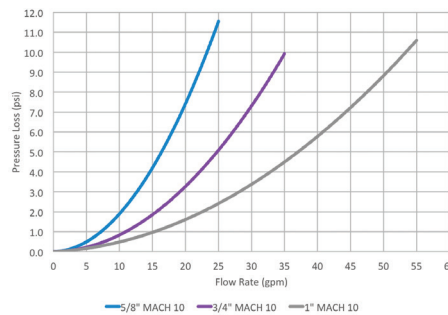
\*Unit cannot be displayed on LCD

## Dimensions

| Meter Size  | Length  | Height    | Threads (NPSM)   |
|-------------|---------|-----------|------------------|
| 5/8"        | 7 1/2"  | 3 3/16"   | 3/4" - 14"       |
| 5/8" x 3/4" | 7 1/2"  | 3 3/16"   | 1" - 11 1/2"     |
| 3/4"        | 9"      | 3 3/16"   | 1" - 11 1/2"     |
| 3/4" SL     | 7 1/2"  | 3 3/8"    | 1" - 11 1/2"     |
| 3/4" x 1"   | 9"      | 3 3/16"   | 1 1/4" - 11 1/2" |
| 1"          | 10 3/4" | 3 1 1/16" | 1 1/4" - 11 1/2" |
| 1" x 1 1/4" | 10 3/4" | 3 1 1/16" | 1 1/2" - 11 1/2" |

## Pressure Loss

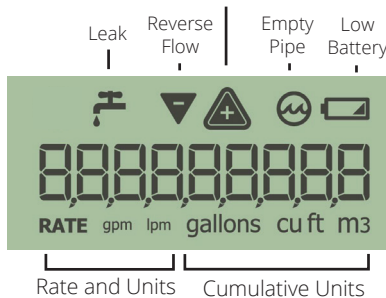
This chart shows typical meter performance. Individual results may vary.



## LCD Display

9-digit display for extra resolution on manual reads.

Forward Flow + Warning for Excessive Flow



## Registration

| High Resolution (8-digit reading) |                  |
|-----------------------------------|------------------|
| 0.1                               | U.S. Gallons     |
| 0.1                               | Imperial Gallons |
| 0.01                              | Cubic Feet       |
| 0.001                             | Cubic Metres     |



Residential Fire Service Meter

**Accu-Flo**  
1-800-921-2228  
www.accuflo.com