

# Be Confident with Sustained Accuracy Over Time

Neptune® MACH 10® Ultrasonic Meter



The MACH 10® ultrasonic water meter features solid state metrology with no degradation of accuracy over time. Combined with a corrosion-resistant, lead free, high-copper alloy maincase, the MACH 10 is built to withstand demanding service conditions and deliver sustained accuracy over the life of the meter.

- Sizes 1½" and 2"
- Extended low-flow range and accuracy
- No maintenance
- Accuracy sustained over meter life
- Advanced ultrasonic technology
- Lead free, high-copper alloy maincase
- Certified to UL 327B (1 ½", 2") for residential fire service applications

**Accu-Flo**  
1-800-921-2228  
[www.accuflo.com](http://www.accuflo.com)

  
**NEPTUNE**  
TECHNOLOGY GROUP  
#winyourday

## Specifications

AWWA C715 Compliant

NSF/ANSI 61 Certified

UL 327B Certified

(Optional for 1 1/2", 2")

### Application

- Cold water measurement of flow in potable, combination potable and fire service, and reclaim/secondary water applications.

### Maximum Operating Water Pressure

- 175 psi

### Operating Water Temperature Range

- +33°F to +122°F (+0.5°C to +50°C)

### Environmental Conditions

- Operating temperature:  
+14°F to +149°F (-10°C to +65°C)
- Storage temperature:  
-40°F to +158°F (-40°C to +70°C)

## Options

### Sizes

- 1 1/2"
- 2"

### Units of Measure

- U.S. gallons, Imperial gallons, cubic feet, cubic metres

### Meter Options

- Potable water
- Reclaim water
- Residential fire service (combo or standalone meter service lines)

## Warranty

- Neptune provides a limited warranty for performance, materials, and workmanship. See warranty statement for details.

## System Compatibility

- Compatible with Neptune R900® and CMIU. Also available as MACH 10®)R900i™ for an integrated radio solution and MACH 10®)TC for Sensus Touch Coupler compatibility.

## Operating Characteristics

| Meter Size | Normal Operating Range @ 100% Accuracy (+/- 1.5%) | AWWA C715 Standard Type 1 | Extended Low Flow @ 100% Accuracy (+/- 3.0%) |
|------------|---|---------------------------|--|
| 1 1/2"     | 0.80 to 125 U.S. gpm                              | 2.0 to 100 U.S. gpm       | 0.30 U.S. gpm                                |
| 2"         | 1.50 to 160 U.S. gpm                              | 2.5 to 50 U.S. gpm        | 0.50 U.S. gpm                                |

## Dimensions

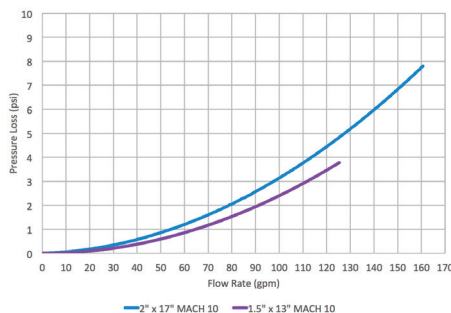
| Meter Size | Length  | Height | Flanges         |
|------------|---------|--------|-----------------|
| 1 1/2"     | 10"     | 6 1/4" | Oval            |
|            | 13"     | 6 1/4" | Oval            |
|            | 12 5/8" | 6 1/4" | Internal Thread |
|            | 12 5/8" | 6 1/4" | External Thread |
| 2"         | 10"     | 6 1/2" | Oval            |
|            | 15 1/4" | 6 1/2" | Oval            |
|            | 17"     | 6 1/2" | Oval            |
|            | 15 1/4" | 6 1/2" | Internal Thread |
|            | 15 1/4" | 6 1/2" | External Thread |

## Registration

| High Resolution (8-digit reading) |                  | 1 1/2" | 2" |
|-----------------------------------|------------------|--------|----|
| 1                                 | U.S. Gallons     | ✓      | ✓  |
| 1                                 | Imperial Gallons | ✓      | ✓  |
| 0.1                               | Cubic Feet       | ✓      | ✓  |
| 0.01                              | Cubic Metres     | ✓      | ✓  |

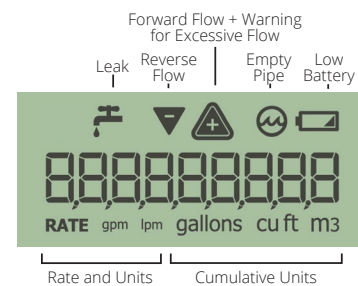
## Pressure Loss

This chart shows typical meter performance. Individual results may vary.



## LCD Display

9-digit display for extra resolution on manual reads.



**Accu-Flo**  
1-800-921-2228  
www.accuflo.com

  
neptunetg.com

Neptune Technology Group  
1600 Alabama Highway 229  
Tallahassee, AL 36078  
800-633-8754 f 334-283-7293