



EB11 'EasyBatch' CONTROLLER

The FLOMEC EB11 "EasyBatch" is a dual stage batch controller designed to create an efficient and accurate dispensing experience. Mountable either directly onto a FLOMEC® flow meter or remotely, and compatible with multiple types of industry signals, the EB11 allows the user to control the volume of fluid dispensed into their process, while the large 7-digit display with back light enables easy reading of the batch status in either light or dark conditions. Housed in an IP66/67-NEMA4X rated Glass Reinforced Nylon enclosure for increased impact and corrosion resistance, particularly in washdown environments. The EB11 contains 2 digital NPN outputs with a current rating of up to 300mA for direct control of solenoid valves, or to connect to relays to allow for the control of large valves and pumps.

FEATURES

- Easy to use 2 button controller
- Weather resistant and durable IP66/67 - NEMA4X enclosure
- Easy to read backlit 7-digit display
- Retained settings after power loss

Accu-Flo
1-800-921-2228
www.accuflo.com

PRODUCT CONFIGURATION

PRODUCT IDENTIFIER **1**

EB11 = EasyBatch dc powered dual stage batch controller

ELECTRICAL ACCESS **2**

1 = M20 x 1.5 mm female threaded conduit entry ports (sealed ports remain IP66/67 when not used)

2 = 1/2 in. NPT female threaded conduit entry ports

FLOW INPUT TYPE **3**

D = Digital (pulse or frequency)

POWER SUPPLY **4**

0 = Self-powered (battery) or regulated 8-24v (dc)

HOUSING TYPE **5**

FM = Universal mount (field or panel) - GRN housing

MM = Integral meter mount - GRN housing*

*MM when retrofitting an instrument to OM series pulse meters



ACCESSORIES (for above series)

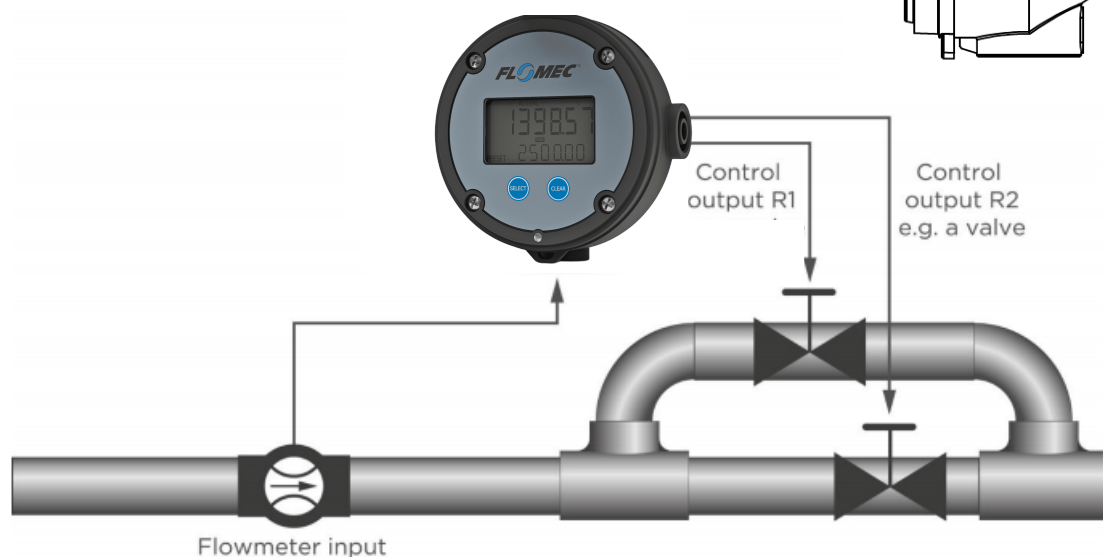
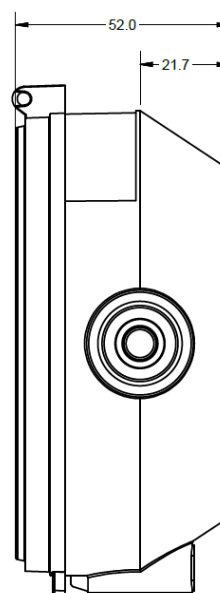
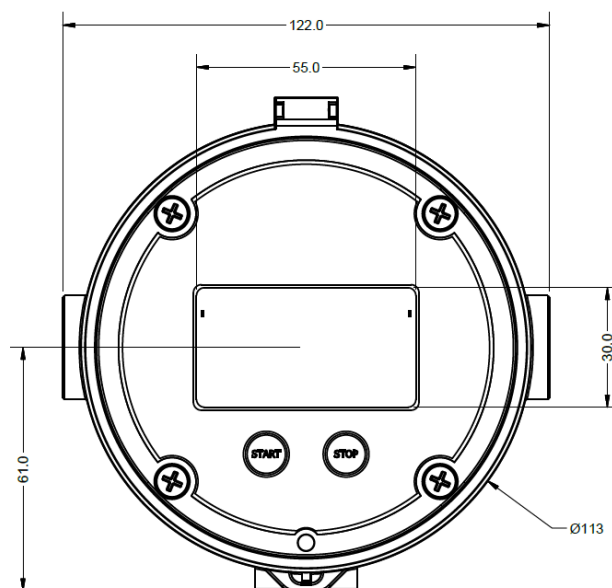
1522001	Stainless steel wall mount kit
1522002	Stainless steel 2 in. pipe mount kit
1502015	Cooling fin kit for flow meters with integral instruments (for operating between 60°C [140°F] and 100°C [212°F])
1322039	ADM M20-M16 metric adapter
1319006	M16 cable gland
1511002	6-core screened instrument cable

SPECIFICATIONS

Display	12 mm 7-digit batch total and 7 mm 7-digit batch preset
Engineering Units	Liters, gallons, m ³ , lbs, kgs, or no engineering units
Input Types & Max Frequency	Namur (4kHz), Reed-switch (120 Hz), NPN (6kHz), PNP (6kHz) and coil.
Control Outputs	GRN housing: 2x 300mA NPN Open Collectors, 24v (dc)
Operating Temperature	Field Mount: -10°C - +60°C (14°F - +140°F)
Enclosures	Field Mount: GRN Housing, IP66 (NEMA4X)
Power Requirements	Field Mount: 10-30v (dc)
Mounting Options	Meter or stem mount, wall, surface, pipe or panel mount*

**Panel mount seal kit required to maintain IP66/67 rating when separating from rear housing for mounting when using GRN housing.*

DIMENSIONS / FIELD MOUNT



Accu-Flo
1-800-921-2228
www.accuflo.com