

HIGH-TEMP BREW METER

FLOMEC[®]

FLOMEC[®]

**THE PERFECT
BREW METER**



BREW A CONSISTENT BATCH EVERY TIME

G2 SERIES FEATURING HIGH-TEMPERATURE RISER AND TRI-CLAMP FITTINGS

Make your perfect recipe every time! The FLOMEC G2 Brew Meter features a high-temperature riser and Tri-Clamp fittings. It's highly dependable and affordable, making it a great choice for small-batch brewers.



Measure the volume of wort transferring to the fermenter

FEATURES & BENEFITS

- High accuracy meter with Q9, battery-powered, LCD display
- Add the 4-20mA Module to your turbine meter display electronics to provide an industry-standard analog signal for connection to a variety of chart recorders, display equipment, and process control equipment.
- Modular design allows for use with output modules, sensors, and remote display kits; plug and play
- Internal parts are simple to replace for easy maintenance
- 11 pre-programmed engineering units plus 1 custom option: gallon, litre, imperial gallon, quart, ounce, acre-foot, millilitre, cubic foot, cubic centimetre, cubic metre, barrel
- Tri-clamp, high temperature, sanitary fittings: 3/4-inch fitting for 1/2-inch pipe, 1-inch fitting for 3/4-inch pipe, 1-1/2-inch fitting for 1-inch pipe, 2-inch fitting for 1-1/2-inch pipe, 2-1/2-inch fitting for 2-inch pipe. For a food-safe metering option, view G Series.
- Field replaceable internal components for easy servicing
- 2 year battery life

Accu-Flo
1-800-921-2228
www.accuflo.com

Wichita · Sydney

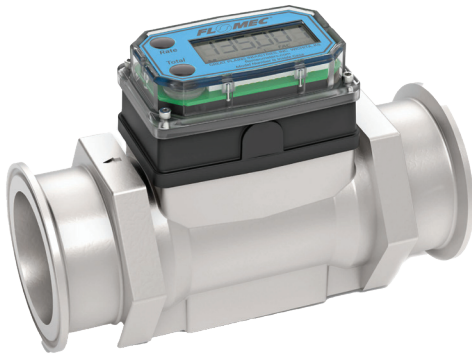
GREAT PLAINS INDUSTRIES



HIGH-TEMP BREW METER



G2 SERIES BREW METER



Pipe Size:	Part Number:
1/2 Inch	G2S05TH9GMX
3/4 Inch	G2S07TH9GMX
1 Inch	G2S10TH9GMX
1 1/2 Inch	G2S15TH9GMX
2 Inch	G2S20TH9GMX

Optional 4-20mA and pulse output available

SPECIFICATIONS

Flow Range:	10-200 GPM (3.8-760 L/min)
Accuracy of Reading:	+/- 0.75%
Type:	Turbine
Working Pressure:	Limited by fitting, clamp size, & temperature
Max Working Temperature:	0° F to 185° F (-18° C to 85° C)
Approvals:	CE, NEMA 4, IP65

4-20MA OUTPUT MODULE FOR G2 TURBINE FLOW METERS



Provide an industry-standard analog signal for connection to a wide variety of PLCs, chart recorders, display equipment, and process control equipment. This module outputs an analog signal which is directly proportional to the frequency of the digital output. With some simple adjustments, you can scale the module to represent whatever range is desired. The kit comes with circuit assembly, enclosure, screws, and 10 feet of cable. This module requires an input power of 8-32 volts DC (24 VDC is recommended).

GSCPS SERIES METER / 3A STANDARDS



Pipe Size:	Part Number:
1 Inch	GSCPS-100-RT14
1 1/2 Inch	GSCPS-150-RT14
2 Inch	GSCPS-200-RT14

GSCPS shown here with RT14, battery powered local digital display, rate and totals. 4-20mA and pulse output available when externally powered.

SPECIFICATIONS

Flow Range:	6.7-330 GPM (25-1250 L/min)
Accuracy of Reading:	+/- 0.5%
Type:	Turbine
Working Pressure:	Limited by fitting, clamp size, & temperature
Max Working Temperature:	-100° F to 225° F (-74° C to 107° C); For SIP (up to 1 hour) 285° F (140° C)
Approvals:	CIP/SIP, 3A 28-04

The G Series High Precision Meter is the most accurate of all the FLOMEC® Turbine Meters. This meter meets the strict 3-A Sanitary Standards using the "Third Party Verification" (TPV) program. Our methods of design, construction, and traceability of components have been reviewed and approved. The internals of this meter are machined or polished to meet 3-A self-draining and cleaning requirements (Ra 32).

Accu-Flo
1-800-921-2228
www.accuflo.com

