



SPECIFICATIONS

Standard Factory Configuration:	2 Totals (1 Resettable, 1 Cumulative); Factory Calibration in gallons or litres; User Calibration and Rate of Flow Indication
Display Electronics:	Q9 Electronics can be used on G2, TM, A1, and QSE Series Meters
Totalizing Registers:	Cumulative and Batch
K-Factor Limits:	Min: 0.001 pulses/unit; Max: 999,999 pulses/unit
Field Calibration:	Field calibrate by user methods: <ul style="list-style-type: none"> • K-factor entry • Correction Factor (% Adjust) • Dispense Display
Readout Totals:	LCD with floating decimal: Minimum Display = 0.001 units; Maximum Display = 999,999 x 100 units (6 digits)
Input Pulse Rate:	Frequency Range is 0.25 Hz - 3 kHz
Turbine Display:	
Internal Power Supply:	2 Alkaline AAA batteries at 1.5 volts each
Alkaline Battery Life:	Typically 2 Years
Temperatures:	
Operating Temperature (FM/ATEX Approved Meters):	0° F to +129° F (-18° C to +54° C)
Operating Temperature (Non-Approved Meters):	0° F to +140° F (-18° C to +60° C)
Storage Temperature:	-40° F to +158° F (-40° C to +70° C)

APPROVALS**

Select A1 & G2 models*



Accu-Flo
1-800-921-2228
www.accuflo.com

FLOMEC®

Q9 DISPLAY

The Q9 is the latest version of the popular FLOMEC computer display. It incorporates many of the most requested features over the years including low battery indication and the ability to display custom units with a name label. Optional plug-in daughterboards for 4-20mA, scaled pulse, and external power supply are easily added as original equipment or as a retrofit in the field. All of the daughterboard parameters are addressable through the two buttons on the Q9 display. An additional new feature is the ability to display velocity as well as rate and totals. Packaged in the same form as the familiar FLOMEC display, the Q9 operates on two AAA batteries with approximately 2 years of operation and maintains all of the same intrinsically safe approvals of past products.

FEATURES / BENEFITS

- Highly Visible LCD characters against a yellow-tinted background
- Many Field Configurable options for ease of operation including diagnostic mode and custom unit name
- Easily retrofit to most existing FLOMEC turbines
- Maximum versatility with optional pre-configured plug-in daughterboards to supply 4-20mA and Scaled Pulse
- Convenient Battery Power Level indication with automatic low battery warning
- Safety first design with FM Class 1, Div 1; ATEX; IECEx; cFM; CE approvals on select A1 and G2 models
- Providing operator consistency for all of your meters, the Q9 can be used with G2, TM, A1, and QSE Series Meters
- Ultimate ease of operation with permanent pre-programmed 5 point factory calibration
- Accommodates a wide range of technical expertise with 3 Field calibration methods (K-Factor, Correction Factor or Dispense Display)
- For simple Plug and Play installation, the Q9 is factory calibrated set to display Cumulative Total, Re-Settable Batch Total and Rate

USER CONFIGURATION

- PIN Protected, four-digit user selectable
- 11 pre-programmed engineering units and one user-configurable custom unit
- Alphanumeric information line for on-screen instructions and custom unit name
- Four pre-programmed, user-selectable time bases (Day, Hour, Min., Sec.)
- Configurable screen update frequency
- A user-selectable low-frequency filter
- Field Calibration is retained when switched to Factory Cal so you can have two accessible calibrations available
- Three field calibration methods available (1 point Dispense Display, 5 point Correction Factor, 5 point K-Factor)
- Diagnostic mode shows % battery life remaining

*See A1 & G2 Data Sheets for models that qualify for approvals.

**All Q9 Displays have the CE approval.

OTHER ELECTRONICS OPTIONS[†]

P9 = Pulse Output Module installed between the local display and the meter body

- Provides a Scaled NPN Open Collector Pulse
- Can provide External Power to the local display
- Comes with 10 ft. of installed cable

42 = 4-20 mA Module installed between the local display and the meter body

- Provides a 4–20 mA signal
- Provides a Scaled NPN Open Collector Pulse
- Can provide External Power to the local display
- Comes with 10 feet of installed cable

PO = Pulse Output Module installed in place of the display (blind meter)

- Provides an Unscaled NPN Open Collector Pulse

R9 = Replacement Q9 Computer Display for a meter body that has an old 09 display¹

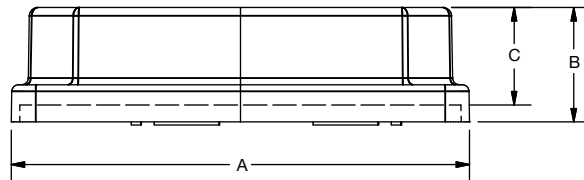
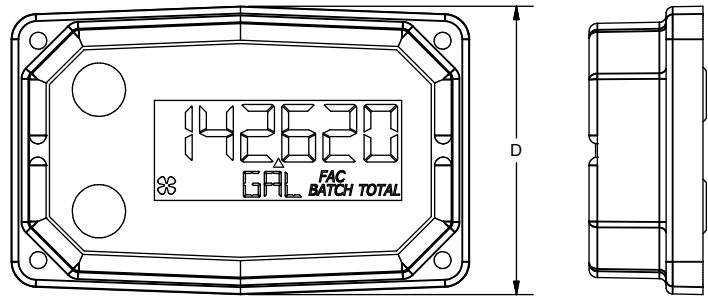
- Comes with the extra parts required to retrofit a Q9 display in place of an 09 display

[†]Separate data sheets available.

¹FM/ATEX Approved when replacing a FM/ATEX Approved 09 display on a FM/ATEX Approved A1 or G2 meter.

DIMENSIONS

Length "A"	Height "B"	Height (Mounted) "C"	Width (Widest Point) "D"
3.40 in. (8.6 cm)	0.85 in. (2.1 cm)	0.72 in. (1.8 cm)	2.14 in. (5.4 cm)



Accu-Flo
1-800-921-2228
www.accuflo.com

Wichita · Sydney

GREAT PLAINS INDUSTRIES



© 2021 Great Plains Industries, Inc. All Rights Reserved.

Service & Warranty: For technical assistance, warranty replacement or repair contact your FLOMEC® or GPI® distributor: In North or South America: 888-996-3837 / FLOMECmeters.com
Outside North or South America: +61 2 9540 4433 / FLOMECmeters.com

IND-1043-Q9 Rev A 01/2021