



Smart cloud software and services for EV fleet charging management

Get ready to transition your fleet to electric with the only end-to-end fleet charging solution designed for the unique business needs of fleet operators.

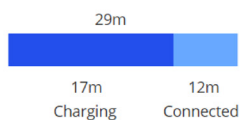
EV Charger
Management
Portal

EV Charging
Infrastructure

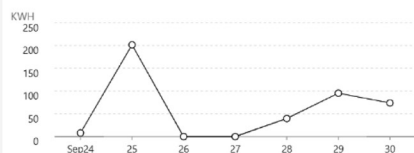
Fleet
EV Driver
App



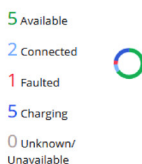
Average Session Length



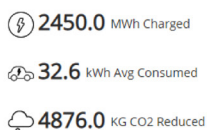
Consumption



Chargers Status



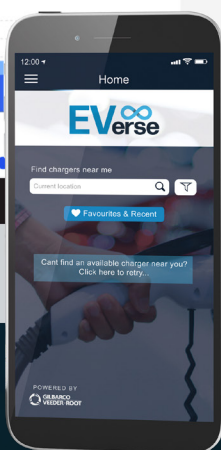
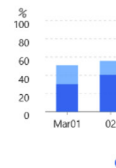
Electricity Emission CO2



Chargers Availability



Chargers Utilization



∞ SIMPLE
to integrate,
use and manage

∞ SEAMLESS
EV fleet driver experience

∞ SCALABLE
and flexible as
your EV fleet evolves

∞ SENSIBLE
investment with low TCO

What is EVerse?

Launch, scale and optimize your EV charging network with EVerse™, the EV charging management platform designed exclusively for fleet managers.

Leveraging the latest cloud technology, EVerse facilitates seamless, integrated EV charging management for fleet managers.

An optional EVerse driver app enriches the user experience whilst enabling fleet managers to track charging activities and manage the network efficiently.

PROVEN PERFORMANCE

∞ 10,000+ plugs managed

∞ 170+ charger types supported

∞ Used by over 700,000 drivers

∞ Present in 18 countries

∞ 10 million+ charging sessions supported

*Figures based on software vendor data



Why EVerse?

SIMPLE | Off-the-shelf solution



Our EVerse Engage Fleet solution takes the stress and hassle out of electrifying your fleet. Backed by all the tools you need to build your EV charging network, EVerse can get your charging operation online in no time.

Part of our unique end-to-end solution

Charging Management Software



Powerful, hardware agnostic technology

EV Charging Hardware



Wide range of EV chargers from 7kW to 350kW

e-Mobility Expertise



Outstanding support and consultancy at every step of the way

Aftermarket Support



Long-established installation, service and maintenance network

SEAMLESS | User Experience

EVerse has been designed for seamless integration for fleet managers and drivers alike. As a trusted partner to tens of thousands of refuelling locations worldwide, we know the importance of business continuity, and are skilled at integrating new devices and technology into our customers' networks.

- ∞ Intuitive & easy-to-use driver & fleet manager tools
- ∞ RFID compatible
- ∞ Vehicle reservation & charging planning
- ∞ Open Charge Point Protocol (OCPP) for hardware freedom
- ∞ Onboarding, integration, aftersales and call center support

SCALABLE | Ready for an electric future

EVerse is flexible, scalable and ready to meet all your EV fleet charging needs today and tomorrow. Compatible with a wide range of charging systems and vehicles, EVerse is ready to support the future of mobility and facilitate charging for current and future EVs.

- ∞ Compatible with a wide range of L2 and DC chargers
- ∞ Control energy use through energy management and reporting
- ∞ Modular software platform: add additional modules as you go
- ∞ Know when to scale your network with actionable, data driven insights

SENSIBLE |

Low TCO for a sound investment, today and in the future

EVerse makes financial business sense. Switching from fuel to electric not only reduces costs by an estimated \$118 per 1000 miles, there are numerous additional financial benefits that stack up to an attractively low total cost of ownership (TCO).

- ∞ Monitor and optimize your EV fleet and charging network on an ongoing basis
- ∞ Access powerful network analytics to make data driven decisions
- ∞ Remote & automatic issue resolution to reduce field service costs
- ∞ Optional smart energy management for maximum energy efficiency



600 EV models

will be launched in the next 5 years, including many LCVs



More than 450

will be pure battery electric vehicles (BEVs)



~\$120 billion

of global investment in battery electric vehicles by 2025



25-30%

of car manufacturer investment will be battery electric vehicle related

Powerful data at your fingertips

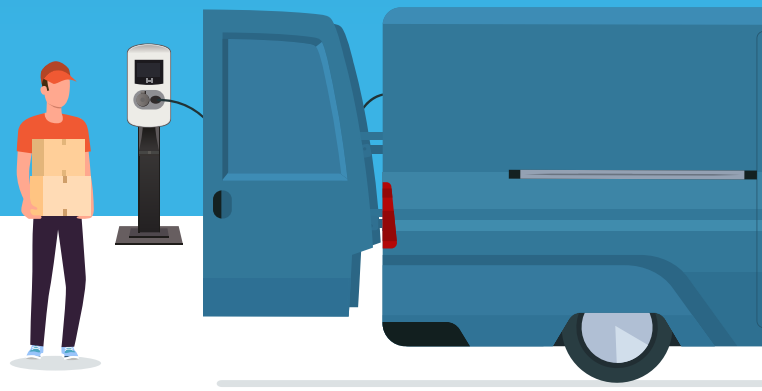
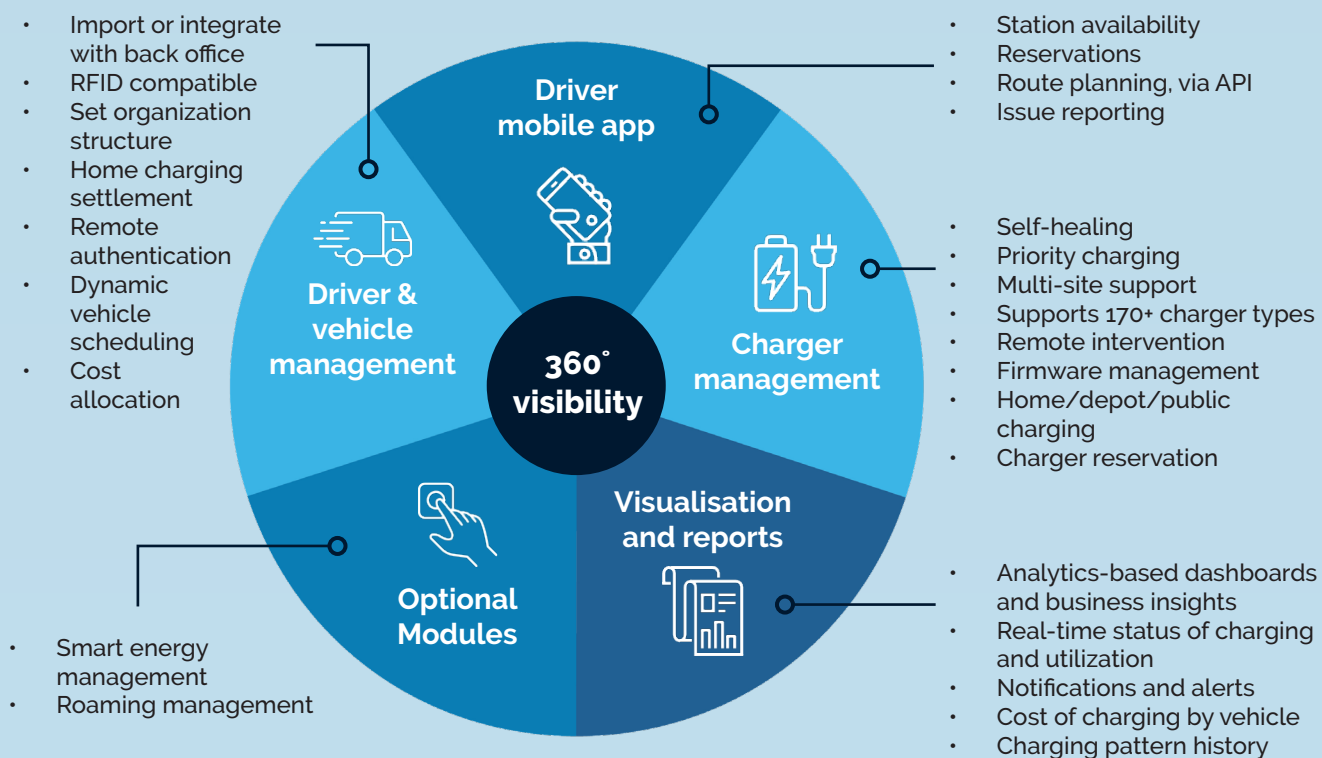
EVerse EV Charger Management Portal: A back office solution like no other

Delivering a stable, cost-effective, and future-proof EV charging network requires a unique set of tools that are purpose built for EV charging.

EVerse offers an intuitive and **cloud-enabled host dashboard that allows complete 24/7 visibility** over your charging operations. With just a few clicks, you can monitor, manage and optimize your charger network from anywhere, at any time.

At the same time, **EVerse keeps your charging network up and running**, reducing downtime and maintenance costs, through innovative always-on technology that continually scans for potential issues, troubleshooting and fixing without human intervention wherever possible.

End-to-end solution for EV fleet management





EVerse Driver App

Unlock powerful EV driver insights when you combine the EVerse charger management platform with the EVerse driver app.

Benefits for the driver

- ∞ Station availability
- ∞ Charger reservations
- ∞ Route planning
- ∞ Issue reporting
- ∞ Call center support
- ∞ Seamless customer experience

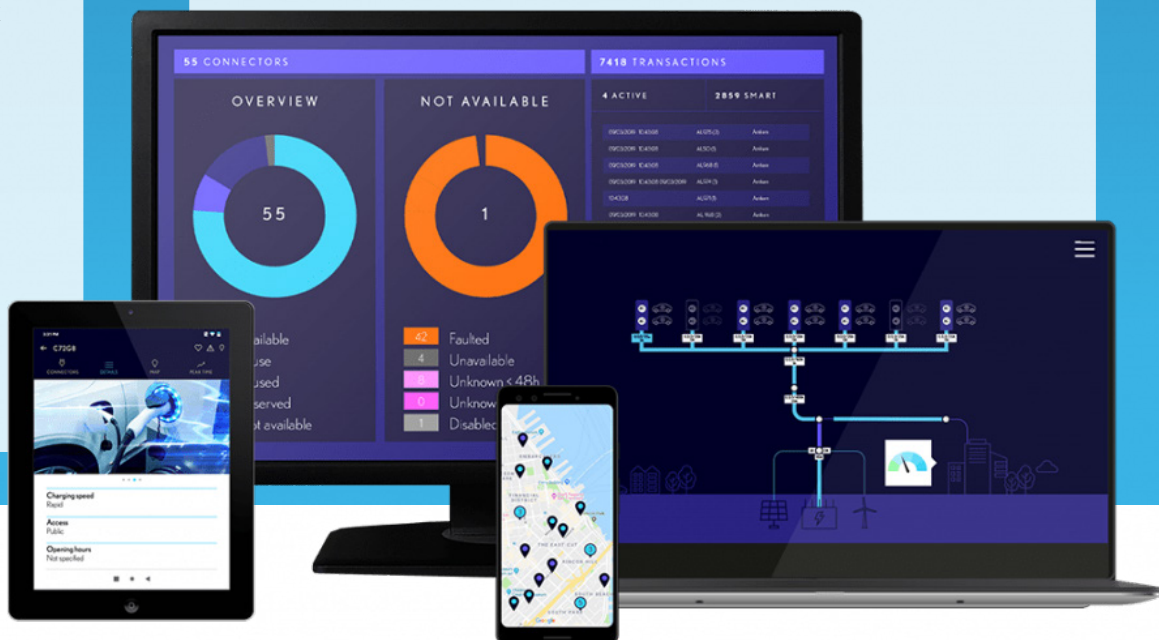
Benefits for your network

- ∞ Monitor network usage and performance
- ∞ Be alerted to issue reports
- ∞ Track EV driver usage
- ∞ Optimize fleet behaviour

Full custom software deployment for specialized applications



- ∞ Customized software solution
- ∞ Built from a modular software platform designed for EV charging management
- ∞ Operator portal to manage a network of hosts/stations
- ∞ Dedicated build and deployment support
- ∞ Options for ongoing operational support
- ∞ Multiple 3rd party integrations and customizations possible



Ready to join the e-Mobility revolution?

Speak to our specialist e-Mobility team to find out more:

gilbarco.com/e-mobility



**Integrated
Offering**



**Decisions
Based on Fleet
Analytics**



**Powerful,
Flexible
Software**



**Outstanding
Service
Capability**

Why choose Gilbarco Veeder-Root?

Our mission is to build cleaner, more sustainable mobility of the future. We recognize the vital role fleet operators play in building out the e-Mobility transport and infrastructure that is needed to achieve our collective goal to reach net zero.

Our e-Mobility portfolio is the result of our 150+ years' experience innovating for mobility, and has been expertly designed to remove all barriers to electrification and enable the fastest, easiest, most profitable transition to electric possible.

EVerse and the EVerse logo are trademarks of Gilbarco Inc.
© 2021 Gilbarco Inc.
All Rights Reserved.

P-2729 | 09.21 | Gilbarco Veeder-Root | 7300 W. Friendly Ave., Greensboro, NC 27410

Accu-Flo
1-800-921-2228
www.accuflo.com

EV[∞]
erse



**GILBARCO
VEEDER-ROOT**