

# SMARTCOVER<sup>®</sup>

WE'VE GOT IT COVERED<sup>™</sup>

## SmartLevel<sup>®</sup> Surface

### Delivers Level Monitoring Capabilities at Rivers, Streams, Canals and Reservoirs

Flooding, excessive rainfall, and storms often lead to issues related to elevated levels in canals, creeks, rivers and other water systems. SmartCover's SmartLevel<sup>®</sup> Surface system offers resilient and trusted technology to monitor and report on real-time changes in water level in remote locations.

SmartLevel<sup>®</sup> Surface has taken our industry leading level monitoring system and configured it in an enclosure designed specifically to survive harsh weather conditions. These can be installed in a variety of surface water and in-vault monitoring applications.

SmartLevel<sup>®</sup> Surface coupled with SmartCover's integrated analytics identifies rainfall intensity and duration, resulting in informed and proactive decision making on managing flooding and heavy rainfall before, during, and after storm events.



#### SmartLevel<sup>®</sup> Surface Features & Benefits

- Easy and flexible installation allows for mounting to almost any surface
- Real-time data analytics provide insights to enhance decision making and minimize response time
- Secure and reliable satellite communications provide constant remote monitoring with no downtime during storms and hurricanes
- Built-in power source with 2-year life allows for worry free maintenance
- Easy-to-use web-based interface and mobile app delivers insights whenever and wherever you need them

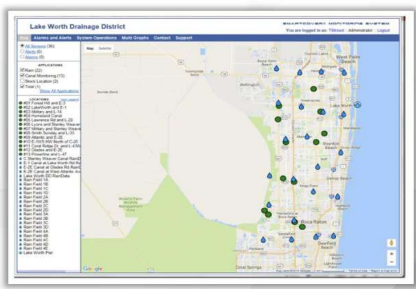


**Accu-Flo**  
1-800-921-2228  
www.accuflo.com

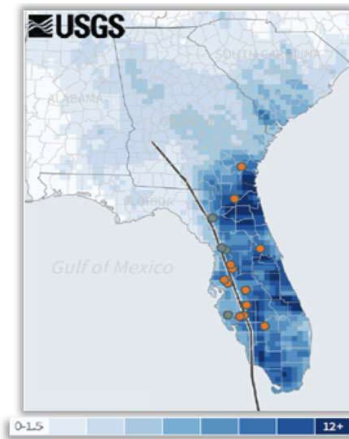
# Success Story

## Lake Worth Drainage District, FL

- **CHALLENGE:** The District lacked a system-wide view of the condition of their canal network, requiring staff to be on the road, continually checking the status of the District's infrastructure and attempting to prepare for upcoming events, such as Hurricane Irma.
- **SOLUTION:** The District's solution was to acquire and deploy SmartLevel® Surface devices, using satellite communication to constantly transmit the dynamic conditions within the District's flood control infrastructure. The system was put to the test during Hurricane Irma in September 2017 when powerful winds and devastating flooding came to a large part of the eastern US seaboard.
- **RESULTS:** With the integrated solution giving combined visibility on the canal status as well as rainfall intensity and duration, the District was able to predict the performance of its flow control infrastructure, project peak stages and make informed proactive decisions on managing their system during this historic event. This adaptive monitoring solution allowed the District to operate with no interruption in service prior to, during, or after Irma.



LWDD's Monitoring and Sewer Intelligence System



Rainfall Totals, Hurricane Irma 2017 (USGA)



LWDD's Data during Hurricane Irma

**Accu-Flo**  
1-800-921-2228  
www.accuflo.com

### About SmartCover:

SmartCover© Systems offers cost-effective satellite manhole monitoring solutions to eliminate sewer overflows, optimize collection system cleaning, minimize odorous H<sub>2</sub>S gas, and accurately identify inflow and infiltration (I&I). Our comprehensive dashboard with alarms and notifications allows you to efficiently manage real-time data to enhance performance, reduce costs, and optimize resources.

### SmartCover Differentiators:



Satellite communication delivers constant visibility



No confined space entry reduces resources and safety hazards



Real-time alarms and notifications provide advanced notice



Mobile app delivers system insights wherever and whenever



Available data one hour after installation provides instant coverage



Data management and turnkey analytics improve decision making



Available API fully integrates multiple systems



Entry detection at every site provides instant notification of access