

See it. Analyze it.
Optimize it.

Control every detail,
every day with Islander PLUS.



Data is your most powerful tool for building efficiency, creating consistency, and keeping costs down. So we built Islander PLUS to deliver it all, combining the CFN PLUS fuel controller and the ICR PLUS fleet card reader into one powerful package that gives you precisely the connectivity and control you need. But we didn't stop there.

Islander PLUS can also process that data in just about any way you choose and deliver it to you and your staff wherever you happen to be. So you'll get the whole picture. Not to mention a whole new level of efficiency and savings.

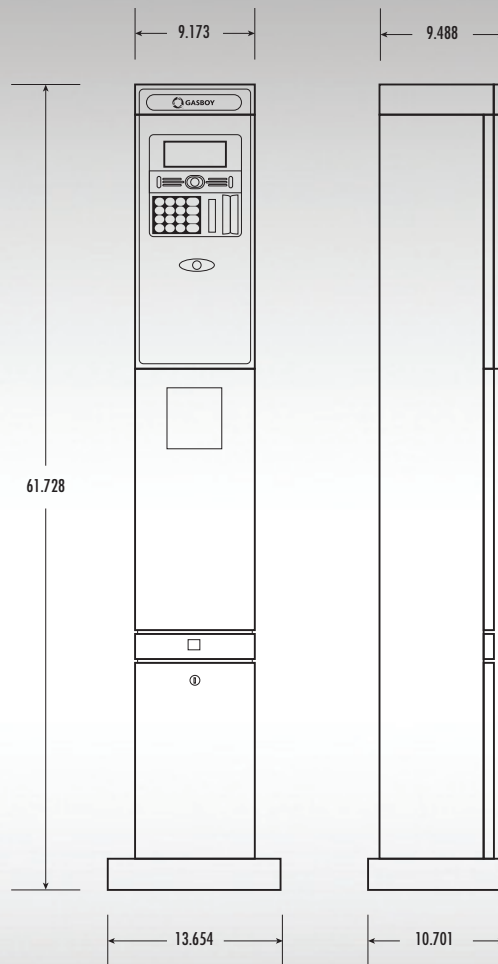
Track costs more precisely with a seamless connection to Gasboy Fleet Head Office.

Collect data without slowing down your operation with support for multiple access technologies, including web-based and contactless systems.

Stay up and running 24-7 with lighted terminals and secured access for unattended sites.

Are you ready to see more? Talk to your sales rep or visit www.gasboy.com to see what Islander PLUS could do for you.

Hardware



Dimensions are in inches.

Data Entry Options/Access Control

Piezoelectric keypad, magnetic card reader, mifare card/tag reader, HID reader, Vehicle/Driver Identification System (Fuel Point PLUS), and dual Fleetkey readers. Available optional ruggedized thermal printer for purchase receipts printout.

Dispenser Connection Options

Islander PLUS can control up to 8 mechanical hoses or up to 64 electronic hoses. Supports over 50 different types of dispensers in use in many countries.

Communication Options

Support of large variety of communication links: cellular, dial-in modem, VPN, satellite, ADSL, wireless ethernet and more.

Central Controller

Embedded hardware platform designed to withstand the harsh fueling environment. It runs on an embedded operating system and uses a solid state Flash disk and RTC (Real Time Clock) with back-up, along with surge suppressors for transient and noise immunity. Power fail recovery mechanisms included.

Additional Hardware Features

- > Weather-proof enclosure in order to sustain the harsh environment of a Home Base Station
- > Secured remote capabilities for monitoring, management and maintenance activities
- > Serial and Ethernet interface to Automatic Tank Gauge systems using the Veeder-Root Serial Interface Command Protocol
- > Advanced electronic support of mechanical dispensers, enabling pump with totalized, preset and price update

Software

Remote Web Access

Monitor, manage and maintain the Islander PLUS from anywhere. Web Access makes remote and secure management possible. No special management software is necessary. All you need is a standard PC with Internet. The technology is already integrated into the station controller.

Head Office

Fleet Head Office consolidates the data from multiple sites, centralizes management and generates reports, including exception reports. It also enables control of the limits and restrictions placed on the various fleet vehicles. And authorized fleet personnel are able to log-in remotely so they have the ability to control and manage wet stock inventory on all stations including orders, deliveries and reports.

Restrictions and Limits

We make it easy to control a fleet's fuel expenses. By defining limits (day, week, month), maximum number of refueling (day, week, month) and setting restrictions (days of the week, fuel type, stations, time intervals), you can maximize profitability. And when you have multiple sites, the centralized Fleet Head Office can synchronize data so that the limits can be applied to all of your sites. Even in the case of communication failure, a site will be able to refuel for a predefined grace period (parameter) using the most recent limits stored in its database.

System Reports

The Islander PLUS application provides a highly flexible report utility for producing a wide range of data reports. So fleet managers and head office managers can review fueling transactions from different aspects and ascertain balance between sales and buys, fleet expenses, vehicle performance and more.

Two different types of reports are available:

Custom Reports

Enable the user to generate reports performed in the location by the following profiles:

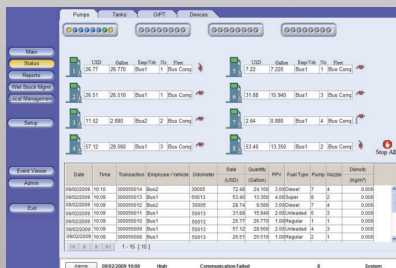
- > **Transactions:** Sums up transaction details in order and broken down by the selected field
- > **Products:** Sums up all data in the report by product, containing total transactions amount and quantity sold
- > **Payment Mode:** Sums up all data by payment whether Customer, Credit or Cash depending on the application settings

Export Reports

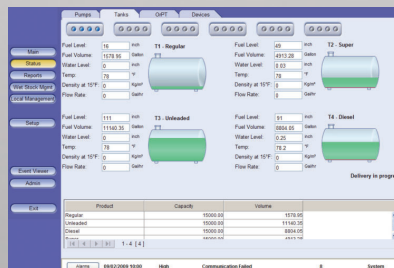
Enable the user to generate and export records of the transactions performed in the location by the following parameters:

- > **Date range**
- > **Transactions:** Differentiate by field name, format, width and precision
- > **From last export**

Users can transfer the report in CSV, text or XML. They can set the delimiter, the decimal point notation and column names. The format column enables users to define specific formats, such as: date and time, left justification and zero padding for numbers. The reports can run manually or automatically. If they run automatically, the storage location is either FTP or Local Directory.



Real Time Fueling



Real Time Tank Level

ID	Date	Time	Fuel	Product	Quantity	Volume
1	18/02/2009	09:22:17	Professional Fuel and Marine	004452	0.000	15.41
2	18/02/2009	09:22:17	Professional Fuel and Marine	004452	0.000	27.29
3	18/02/2009	09:22:17	Professional Fuel and Marine	004452	0.000	26.27
4	18/02/2009	09:24:14	Professional Fuel and Marine	004451	0.000	16.14
5	18/02/2009	09:24:14	Professional Fuel and Marine	004451	0.000	11.17
6	18/02/2009	09:24:14	Professional Fuel and Marine	004451	0.000	16.14
7	18/02/2009	09:24:14	Professional Fuel and Marine	004451	0.000	16.26
8	18/02/2009	09:24:14	Professional Fuel and Marine	004451	0.000	16.26
9	18/02/2009	09:24:14	Professional Fuel and Marine	004451	0.000	16.26
10	18/02/2009	09:24:14	Professional Fuel and Marine	004451	0.000	16.26
11	18/02/2009	09:24:14	Professional Fuel and Marine	004451	0.000	16.26
12	18/02/2009	09:24:14	Professional Fuel and Marine	004451	0.000	16.26
13	18/02/2009	09:24:14	Professional Fuel and Marine	004451	0.000	16.26
14	18/02/2009	09:24:14	Professional Fuel and Marine	004451	0.000	16.26
15	18/02/2009	09:24:14	Professional Fuel and Marine	004451	0.000	16.26
16	18/02/2009	09:24:14	Professional Fuel and Marine	004451	0.000	16.26
17	18/02/2009	09:24:14	Professional Fuel and Marine	004451	0.000	16.26
18	18/02/2009	09:24:14	Professional Fuel and Marine	004451	0.000	16.26
19	18/02/2009	09:24:14	Professional Fuel and Marine	004451	0.000	16.26
20	18/02/2009	09:24:14	Professional Fuel and Marine	004451	0.000	16.26
21	18/02/2009	09:24:14	Professional Fuel and Marine	004451	0.000	16.26
22	18/02/2009	09:24:14	Professional Fuel and Marine	004451	0.000	16.26

Real Time Reporting

ISLANDER PLUS - PEDESTAL WITH UP TO: ELECTRONIC; 4 MECHANICAL PUMPS**8 MECHANICAL PUMPS**

Name	Islander PLUS	Islander PLUS
Supply voltage	100/240 VAC	120/240 VAC
Power consumption	2A max	2A-1A max
Operating temperature	-22 °F to +113 °F (-30 °C to +45 °C) -4 °F to +113 °F (-20 °C to +45 °C) (Option with printer)	-40 °F to +104 °F (-40 °C to +40 °C) -4 °F to +104 °F (-20 °C to +40 °C) (Option with printer)
Storage temperature	-40 °F to +158 °F (-40°C to +70 °C)	-40 °F to +158 °F (-40°C to +70 °C)
Humidity	80% non-condensing	80% non-condensing
Dimensions	9.45"W x 61.02"H x 9.45"D (24x155x24 cm)	9.45"W x 61.02"H x 9.45"D (24x155x24 cm)
Communication interface	RS-485 – 9600bps, Half-Duplex RS-232 Ethernet RJ-45 – 10 Mbps EIA 802.15.4	RS-485 – 9600bps, Half-Duplex RS-232 Ethernet RJ-45 – 10 Mbps EIA 802.15.4
Pump control maximum current (4 solid state Relay Channels)	Motor maximum: 1 HP at 115 VAC or 2 HP at 230 VAC. Additional external relay must be used if pump motor exceeds these limitations.	Motor maximum: 3/4 HP at 115 VAC or 1.5 HP at 230 VAC. Additional external relay must be used if pump motor exceeds these limitations.
Power supply output voltage to pulsar unit	12 VDC +/- 20%	12 VDC +/- 20%
Pulsar supply maximum output current	80 mA max	30 mA max
Pulsar input high level voltage	9 to 15 VDC	9 to 15 VDC
Pulsar input high level sink current (@15V)	3 mA	3 mA
In-use "on" level (input)	100-240 VAC, 50/60Hz, 2 W (20 mA)	100-240 VAC, 50/60Hz, 2 W (20 mA)
In use "off" level (input)	0 to 20 VAC	0 to 20 VAC

Download full bid & spec on www.gasboy.com.

View Islander PLUS video demo.



Accu-Flo 1-800-921-2228
www.accuflo.com