



# HIGH PERFORMANCE PROTECTUS® III FIRE SERVICE METER

SIZES: 4", 6", 8", and 10"



HP PROTECTUS® III  
Fire Service Meter

The HP PROTECTUS® III Fire Service meter is designed to measure both domestic and fire service water usage through a single water line.

The HP PROTECTUS III Fire Service meter measures extremely wide flow ranges at 100% +/- accuracy. All HP Fire Service meters meet or exceed AWWA C703 Standard, are certified to NSF/ANSI 61, Annex G and Annex F requirements, and are Underwriters Laboratory (UL) Listed and Factory Manual (FM) Approved for fire service use.

APPLICATION

The HP PROTECTUS III Fire Service meter is designed to measure both domestic and fire service water usage through a single water line. A typical application would be in a warehouse, hotel, or hospital where one water line may supply any number of faucets or bathrooms as well as an automatic sprinkler system.

OPERATION

At low flow rates, all flow is through the bypass meter. As flow increases, pressure loss through the bypass meter increases and the detector check valve automatically opens. This condition occurs, for example, when a fire sprinkler system goes into operation. This permits flow through the mainline turbine meter. As flow decreases, reduced pressure loss closes the detector check valve and flow is again directed through the bypass meter.

CONSTRUCTION

- Epoxy-coated steel mainline body
- Integral detector check valve (stainless steel spring-loaded type)
- Epoxy-coated steel strainer body with stainless steel basket
- HP Turbine measuring element
- All bronze bypass assembly
- Lockable ball valves used on bypass
- Check valve used on bypass
- 1" T-10 meter (on 4" size)
- 1 ½" T-10 or 1 ½" HP Turbine meter (on 6" size)
- 2" T-10 or 2" HP Turbine meter (on 8" and 10" sizes)

KEY FEATURES

- Compact Size
  - Standard laying length fits existing installations
  - Lightweight
  - Reduces new installations and replacement costs
- Wide Operating Range
  - Measures extremely wide flow ranges at 98.5%-101.5% accuracy
  - Combines low-flow sensitivity of disc meter with high-flow capacity of turbine meter
  - Registers leaks or unauthorized use of water from fire service lines
- Component Repair and Maintenance
  - Owner maintenance easily accomplished by replacement of major components
  - Calibration vane allows in-field calibration of Unitized Measuring Element (UME)
- Roll-Sealed Registers
  - Eliminates leaking and fogging
  - In-line serviceability
  - Magnetic driven low torque registration
  - Tamperproof seal design

WARRANTY

Neptune provides a limited warranty with respect to its HP PROTECTUS III Fire Service meters for performance, materials and workmanship.

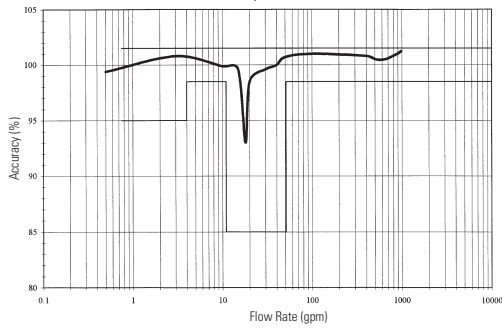
When desired, owner maintenance is easily accomplished either by in-line replacement of the UME.

SYSTEMS COMPATIBILITY

Adaptability to all present and future systems for flexibility.

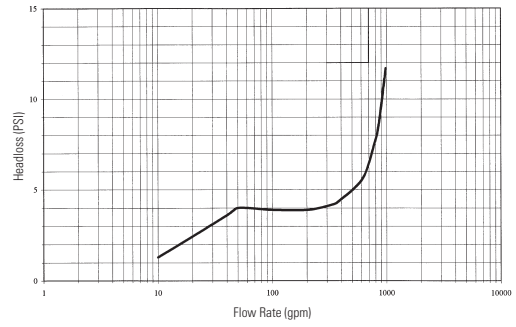
## 4" ACCURACY

4" HP PROTECTUS III  
Accuracy vs. Flow Rate



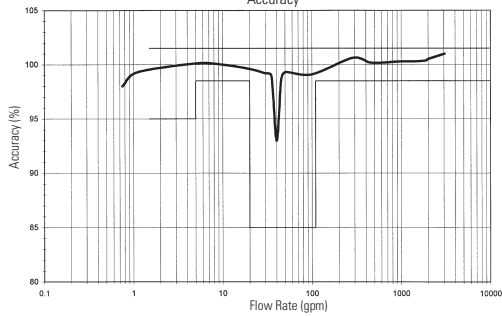
## 4" HEADLOSS

4" HP PROTECTUS III  
Headloss



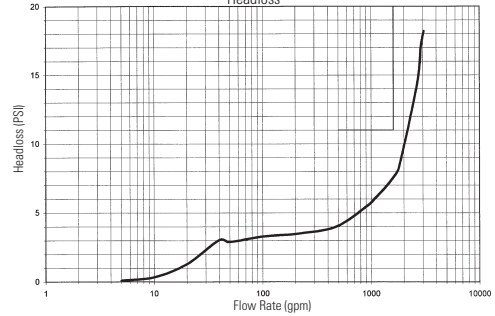
## 6" ACCURACY

6" HP PROTECTUS III  
Accuracy



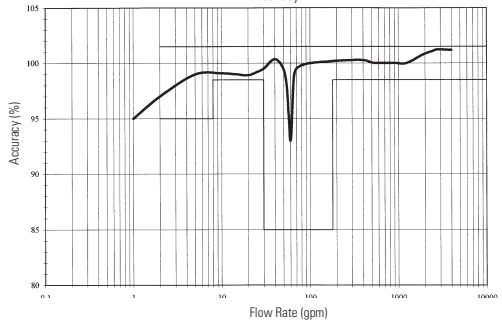
## 6" HEADLOSS

6" HP PROTECTUS III  
Headloss



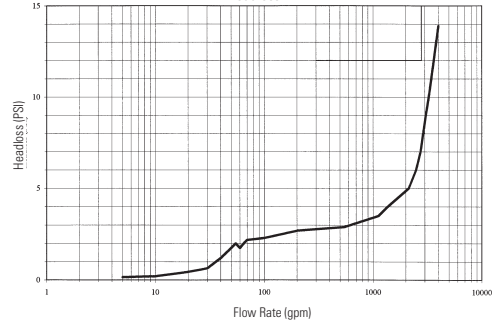
## 8" ACCURACY

8" HP PROTECTUS III  
Accuracy



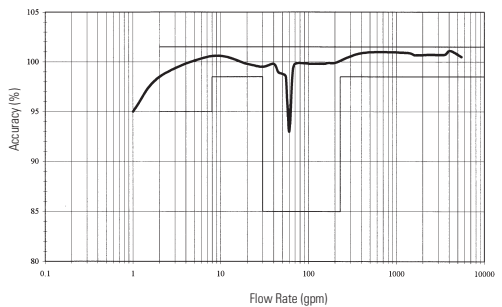
## 8" HEADLOSS

8" HP PROTECTUS III  
Headloss



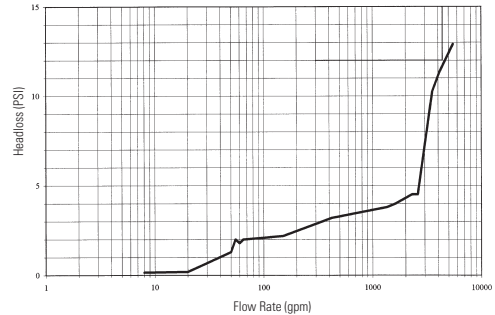
## 10" ACCURACY

10" HP PROTECTUS III  
Accuracy



## 10" HEADLOSS

10" HP PROTECTUS III  
Headloss



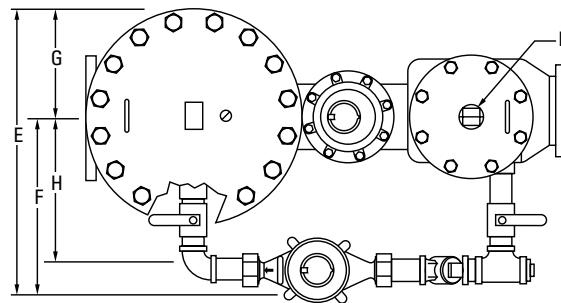
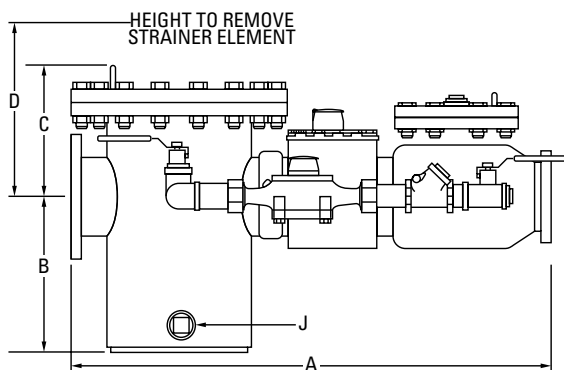
*These charts show typical meter performance. Individual results may vary.*

## OPERATING CHARACTERISTICS

Meter Size	Normal Operating Range @ 100% Accuracy (+/- 1.5%)	AWWA Standard	Low Flow @ 95% Accuracy	Maximum Intermittent Flow Rate
4"	¾ to 1200 US gpm 0.17 to 272.55 m <sup>3</sup> /h	4 to 700 US gpm 0.91 to 1.59 m <sup>3</sup> /h	⅜ US gpm 0.09 m <sup>3</sup> /h	1500 US gpm 340.7 m <sup>3</sup> /h
6"	1 ½ to 2500 US gpm 0.34 to 567.81 m <sup>3</sup> /h	5 to 1600 US gpm 1.14 to 363 m <sup>3</sup> /h	¾ US gpm 0.17 m <sup>3</sup> /h	3100 US gpm 704.1 m <sup>3</sup> /h
8"	2 to 4000 US gpm 0.45 to 908.5 m <sup>3</sup> /h	8 to 2800 US gpm 1.8 to 636 m <sup>3</sup> /h	1 US gpm 0.23 m <sup>3</sup> /h	8000 US gpm 1817 m <sup>3</sup> /h
10"	2 to 6500 US gpm 0.45 to 1476.31 m <sup>3</sup> /h	8 to 4400 US gpm 1.8 to 999 m <sup>3</sup> /h	1 US gpm 0.23 m <sup>3</sup> /h	8000 US gpm 1817 m <sup>3</sup> /h

## DIMENSIONS

Meter Size	A in/mm	B in/mm	C in/mm	D in/mm	E in/mm	F in/mm	G in/mm	H in/mm	I in/mm	J in/mm	Weight lbs/kg
4"	33 838	10 254	10 ¾ 273	17 ½ 445	22 559	15 ¼ 387	6 ¾ 171	12 305	2 51	2 51	215 98
6"	45 1143	11 ¼ 281	11 ⅜ 289	21 ¼ 540	29 737	19 ½ 495	9 ½ 241	16 406	2 51	3 76	570 258
8"	53 1346	11 ⅜ 300	13 ⅜ 342	25 ⅜ 657	34 ¼ 870	21 ¾ 552	12 ½ 318	17 432	3 76	3 76	765 347
10"	68 1727	14 ⅜ 376	15 381	30 ⅜ 764	36 ¼ 921	22 ½ 572	13 ¾ 349	18 457	3 76	3 76	900 408



## GUARANTEED SYSTEMS COMPATIBILITY

All HP PROTECTUS III Fire Service meters are guaranteed adaptable to our ARB®V, ProRead™ (ARB VI), E-Coder®, E-Coder®)R900i™, TRICON®/S, TRICON/E®3, and Neptune meter reading systems without removing the meter from service.

## REGISTRATION

Registration (per sweep hand revolution)	Disc Side			Turbine Side		
	1"	1 ½"	2"	4"	6"	8" & 10"
1,000 US Gallons					✓	✓
100 Gallons		✓	✓	✓		
100 Cubic Feet					✓	✓
10 US Gallons	✓					
10 Cubic Feet		✓	✓	✓		
1 Cubic Foot						
10 Cubic Metres	✓					
1 Cubic Metre					✓	✓
0.1 Cubic Metre			✓	✓		

Register Capacity (6 active wheel odometer)	Disc Side			Turbine Side		
	1"	1 ½"	2"	4"	6"	8" & 10"
1,000,000,000 Gallons					✓	✓
100,000,000 Gallons		✓	✓	✓		
100,000,000 Cubic Feet					✓	✓
10,000,000 Gallons	✓					
10,000,000 Cubic Feet		✓	✓	✓		
10,000,000 Cubic Metres					✓	✓
1,000,000 Cubic Metres			✓	✓		
1,000,000 Cubic Feet	✓					
100,000 Cubic Metres	✓	✓				

### SPECIFICATIONS

- Application: cold water measurement of flow in one direction
- Maximum operating pressure: 175 psi (1206 kPa)
- Registers: direct reading, center sweep, roll-sealed magnetic drive with low-flow indicator
- Measuring element: AWWA Class II Turbine, hydrodynamically balanced rotor, nutating disc
- Flanges: round flanged ends per AWWA C207, Class D
- NSF/ANSI 61, Annex G and Annex F certified
- UL listed
- FM approved

### OPTIONS

- Sizes: 4", 6", 8", and 10"
- 300 series stainless steel meter body with:
  - 300 series stainless steel bolts
  - 300 series stainless steel strainer cover and valve cover
  - Epoxy-coated steel strainer and valve cover
- Units of measure: U.S. gallons, imperial gallons, cubic feet, cubic metres
- Register types:
  - Direct reading: bronze box and cover (standard)
  - Remote reading system\*: ARB V, ProRead, E-Coder, E-Coder)R900i, TRICON/S, TRICON/E3
  - Reclaim
- Companion flanges:
  - Cast iron
  - Bronze (4" only)
- Special meter flanges \*\*
  - 12" (for 10" meter size)

\*Consult factory for meter performance specifications when fitted with ARB.

\*\*Non UL/FM approved

Neptune Technology Group Inc.  
1600 Alabama Highway 229  
Tallahassee, AL 36078  
USA  
Tel: (800) 633-8754  
Fax: (334) 283-7293

Neptune Technology Group (Canada) Ltd.  
7275 West Credit Avenue  
Mississauga, Ontario  
L5N 5M9  
Canada  
Tel: (905) 858-4211  
Fax: (905) 858-0428

Neptune Technology Group Inc.  
Ejército Nacional No. 418  
Piso 12, Desp. 1201-1202  
Col. Chapultepec Morales  
Delegación Miguel Hidalgo  
11570 México, Distrito Federal  
Tel: (525) 55203 5294 / (525) 55203 5708  
Fax: (525) 55203 6503

